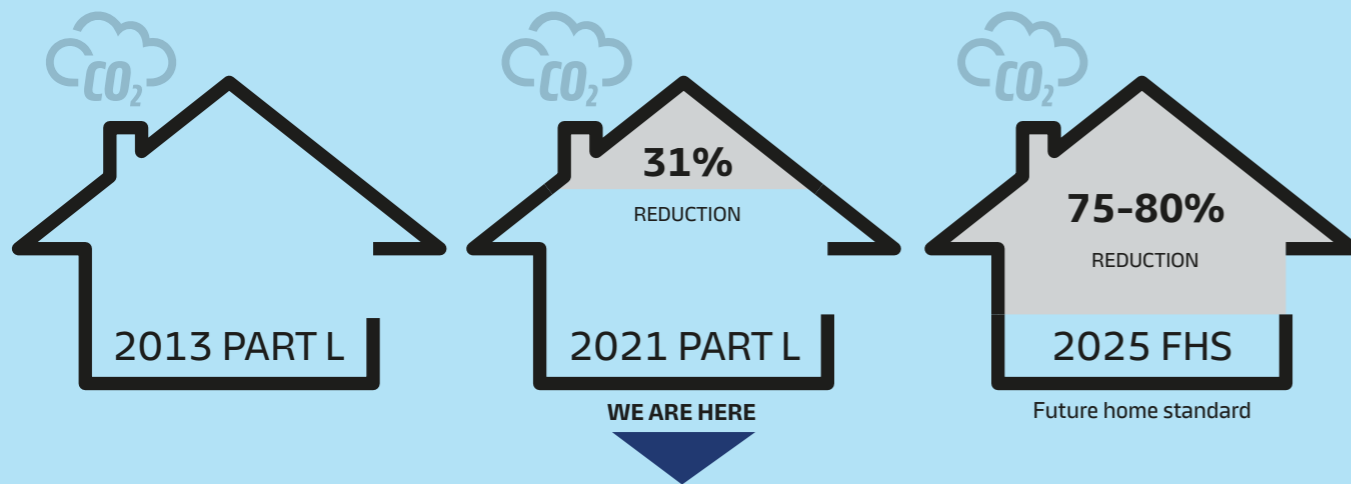


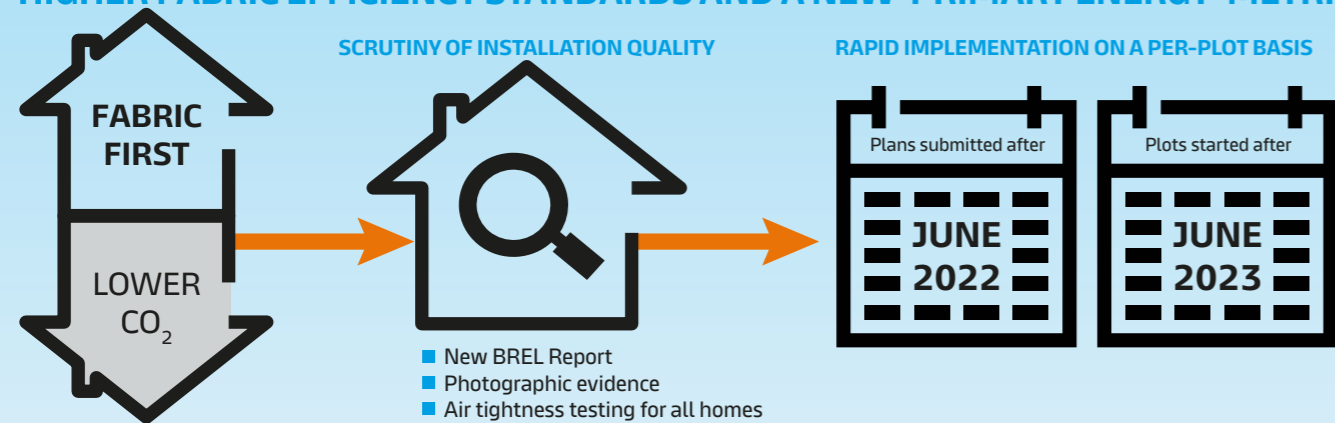
# APPROVED DOCUMENT L 2021

## WHAT'S NEW FOR HOUSEBUILDERS?

### NEW HOME CARBON EMISSIONS DELIVERED VIA FABRIC & TECHNOLOGY



### HIGHER FABRIC EFFICIENCY STANDARDS AND A NEW 'PRIMARY ENERGY' METRIC



### HOUSEBUILDERS HAVE TWO ROUTES TO COMPLIANCE USING NON-COMBUSTIBLE INSULATION

ROUTE 1	AN INTERIM DESIGN FOR INTERIM STANDARDS
ROUTE 2	FUTUREPROOFING FUTURE HOMES

- Retain existing cavity widths & plot footprints
- Minor upgrades to wall insulation
- Significant upgrades in lofts (more cost-effective)
- Increase use of PV
- Increase cavity widths in preparation for Future Homes Standard fabric
- Balance wall, roof and floor insulation through various compliance recipes
- Product flexibility to maximise supply chain agility
- Less reliance on high embodied carbon products

### WHICHEVER PATH YOU TAKE, MAKE IT YOURS

Don't make the mistake of copying the notional dwelling. **The most cost-effective specification will always be a bespoke whole-house recipe based on SAP calculations.**

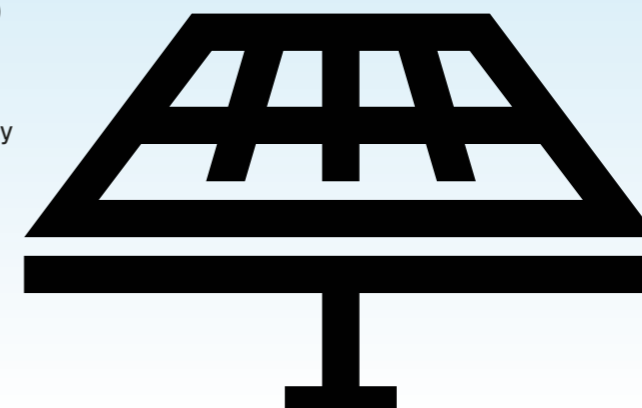
### WE ARE READY TO HELP

As the UK's leading manufacturer of high performance, non-combustible insulation used in new build housing, we can help you achieve cost-effective compliance, without compromising on quality, combustibility, whole-life carbon or your customers' expectations. We offer:

- Whole-house compliance recipes
- Free 3D U-value calculations
- Advice on quality assurance
- SAP optimisation and modelling
- Technical advice and guidance
- Psi-value calculations

Register for your free copy of our Approved Document L Guide at:

[knauf.com/en-GB/knauf-insulation/competencies/expertise/housebuilders-hub](https://knauf.com/en-GB/knauf-insulation/competencies/expertise/housebuilders-hub)



**Build on us.**

